

ELEVATION A



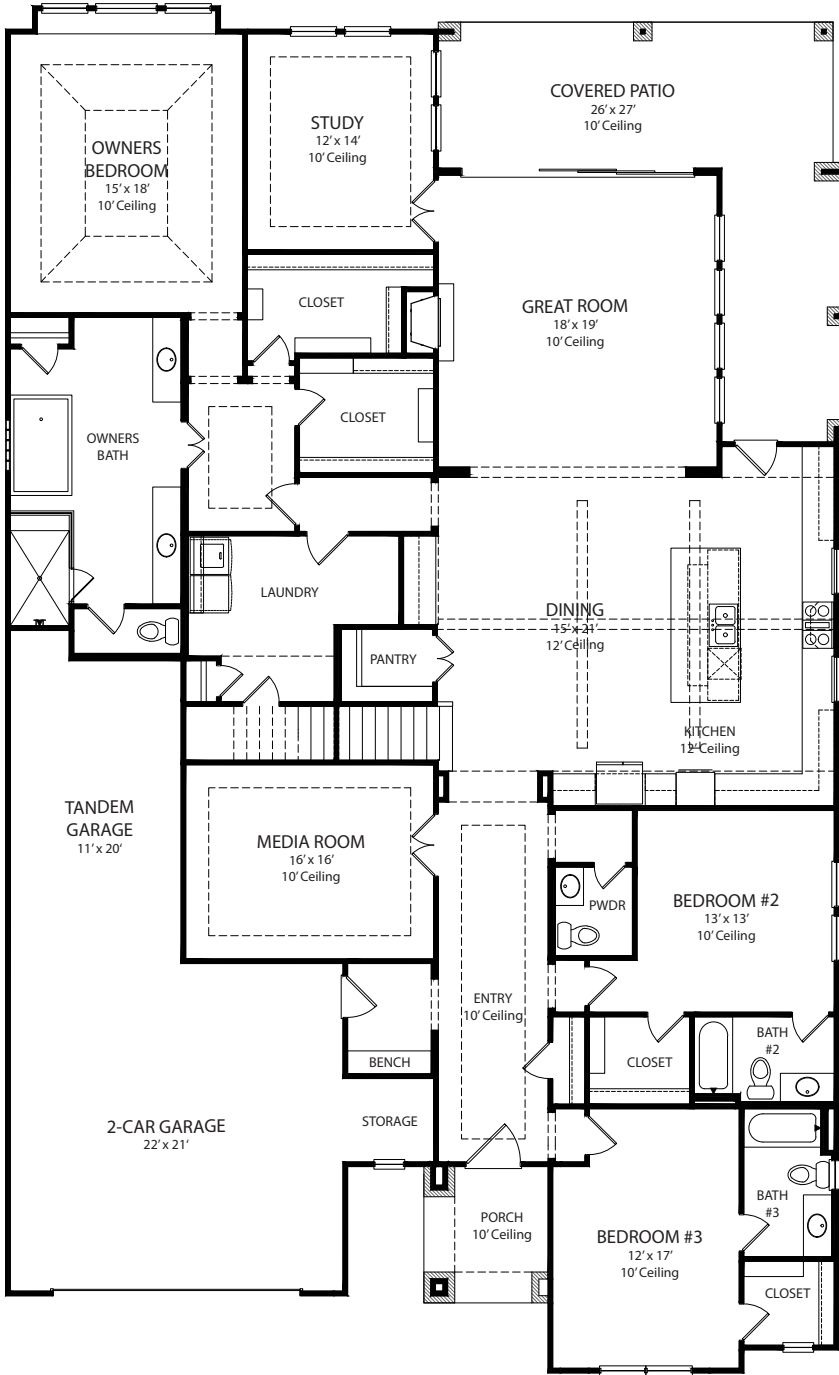
320 Peach Point Rd • 5531/A • Complete April 2023
4,050 sq ft - 2 Story - 4 Beds - 4 Full Baths - 1 Powder Bath
Media Room - Gameraom - Study - 3 Car Tandem Garage



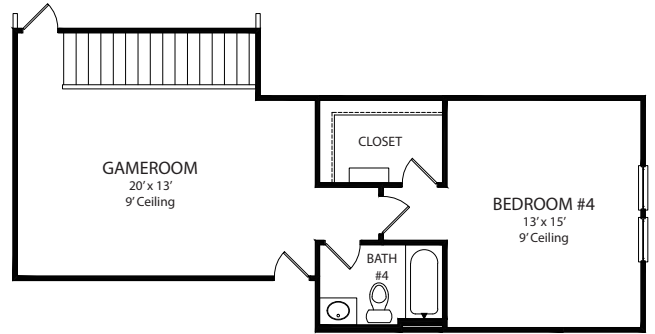
All information is deemed reliable as of publication date but not guaranteed and remains subject to change daily without notice including, but not limited to base price, availability, incentives, floor plans, standard specifications, options, assessments and fees, planned amenities, conceptual artists' renderings and community development plans. Price(s) shown do not reflect lot premiums, upgrades and options. Site maps, elevation renderings and marketing plans are not to scale and all dimensions are approximate. Please see a Community Sales Manager and visit www.traditionhomes.com for details. © 2022, Tradition Homes, LLC. All rights reserved.

The Tradition Continues
TRADITIONHOMES.COM

FIRST FLOOR



SECOND FLOOR



All information is deemed reliable as of publication date but not guaranteed and remains subject to change daily without notice including, but not limited to base price, availability, incentives, floor plans, standard specifications, options, assessments and fees, planned amenities, conceptual artists' renderings and community development plans. Price(s) shown do not reflect lot premiums, upgrades and options. Site maps, elevation renderings and marketing plans are not to scale and all dimensions are approximate. Please see a Community Sales Manager and visit www.traditionhomes.com for details. © 2022, Tradition Homes, LLC. All rights reserved.

The Tradition Continues

TRADITIONHOMES.COM