

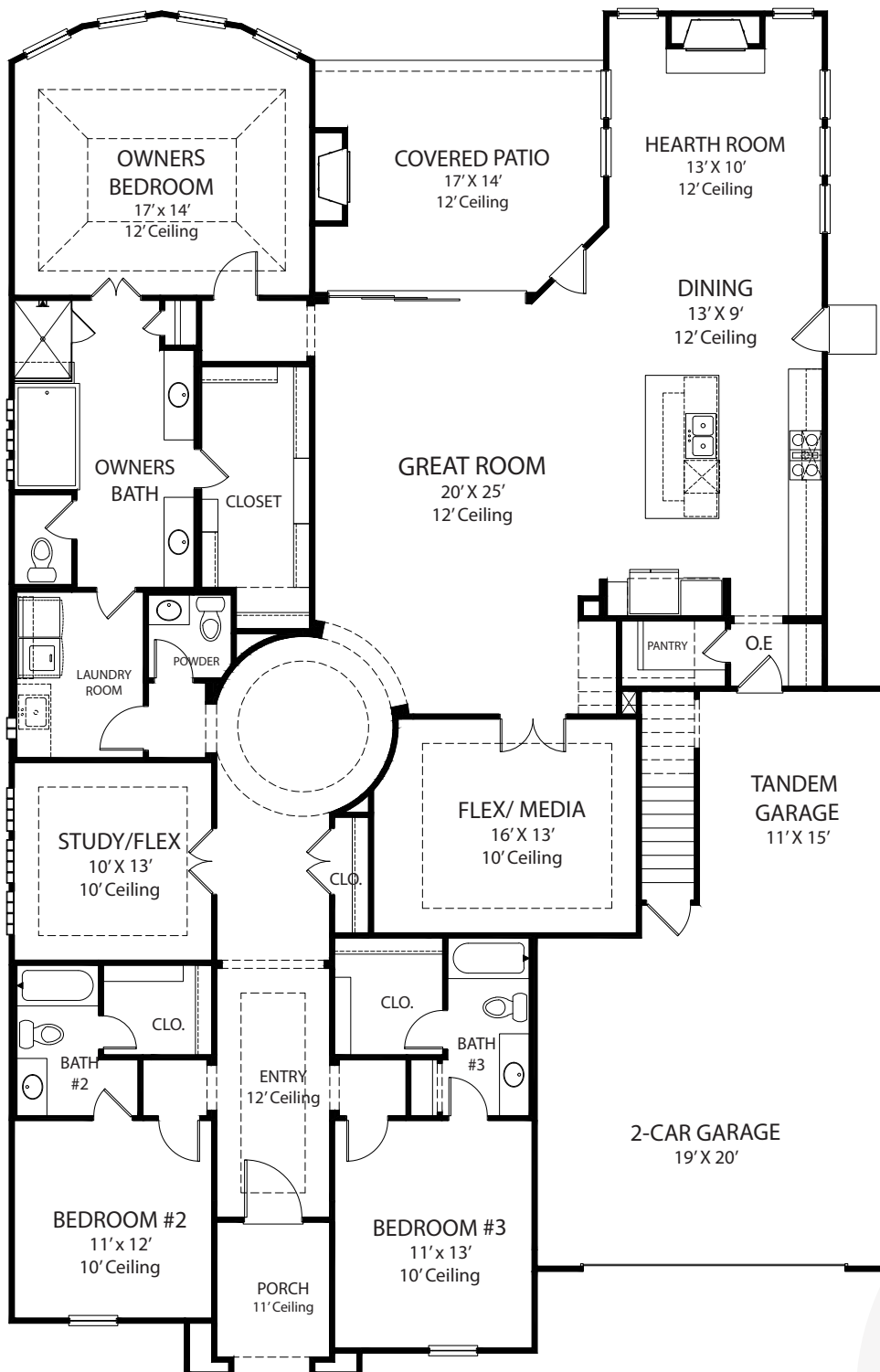
ELEVATION C



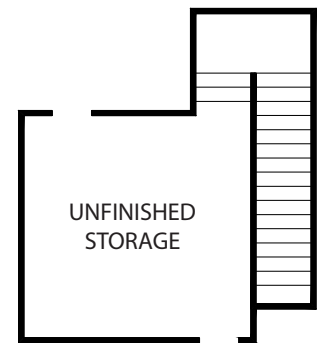
310 Peach Point Rd • 5511/C
3,387 sq ft - 1 Story - 3 Beds - 3.5 Baths -
Media/Flex Room - Study - Hearth Room - Unfinished Storage
3 Car Tandem Garage



FIRST FLOOR



SECOND FLOOR



All information is deemed reliable as of publication date but not guaranteed and remains subject to change daily without notice including, but not limited to base price, availability, incentives, floor plans, standard specifications, options, assessments and fees, planned amenities, conceptual artists' renderings and community development plans. Price(s) shown do not reflect lot premiums, upgrades and options. Site maps, elevation renderings and marketing plans are not to scale and all dimensions are approximate. Please see a Community Sales Manager and visit www.traditionhomes.com for details. © 2022, Tradition Homes, LLC. All rights reserved.

The Tradition Continues

TRADITIONHOMES.COM