



TRADITION  
HOMES

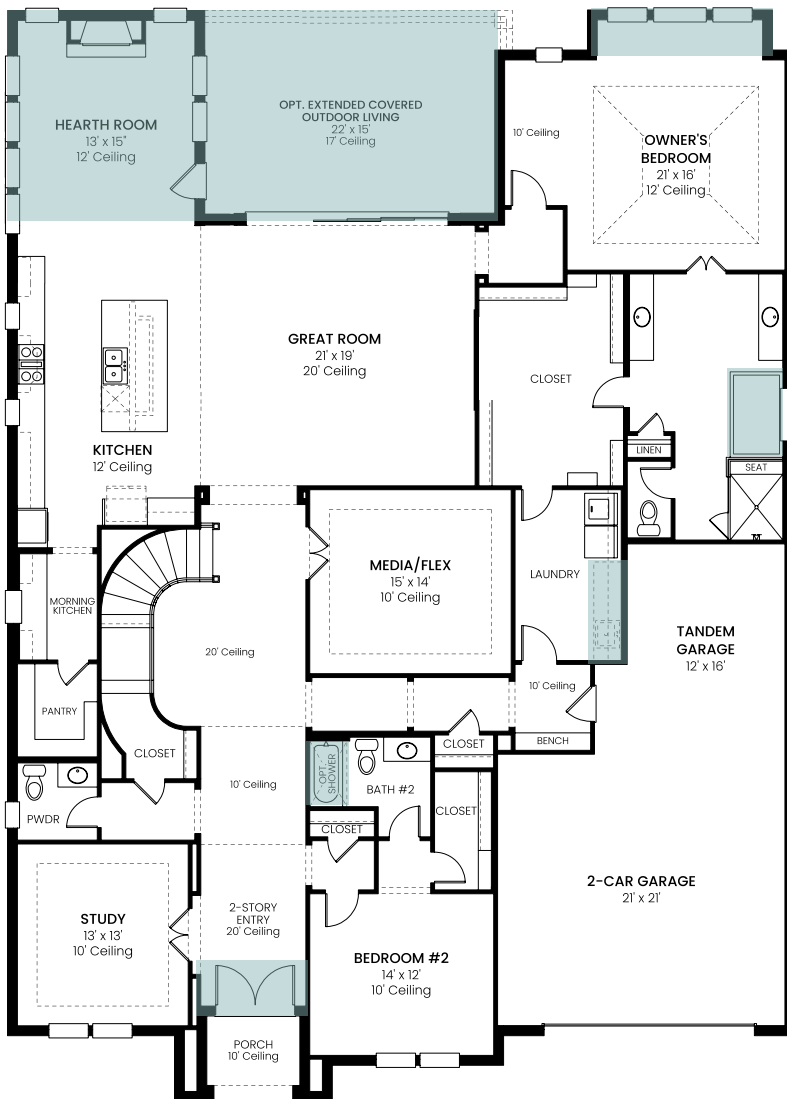
# STARVIEW 74'

**610 Apogee Dr | 6061 B**

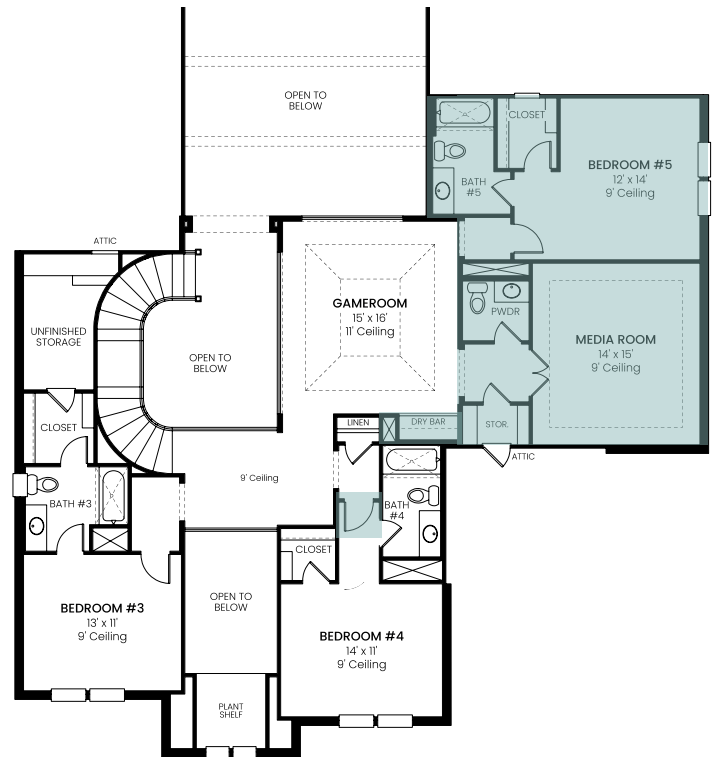
5,399 sq ft - 2 Story - 5 Beds - 5 Full Baths - 2 Powder Baths - Study - Hearth Room - Media Room - Gameroom - 3 Car Tandem Garage

**Options Added:** Owner's Bay Window - Owner's Free Standing Tub - Sliding Glass Door - Extended Covered Patio - Extended Hearth Room - Laundry Room Cabinets & Sink - Bath #2 Shower - Double Front Door - Dry Bar at Gameroom - Bed/Bath #5 & Media Room - Ensuite Bed/Bath #4

## FIRST FLOOR



## SECOND FLOOR



All information is deemed reliable as of publication date but not guaranteed and remains subject to change daily without notice including, but not limited to base price, availability, incentives, floor plans, standard specifications, options, assessments and fees, planned amenities, conceptual artists' renderings and community development plans. Price(s) shown do not reflect lot premiums, upgrades and options. Site maps, elevation renderings and marketing plans are not to scale and all dimensions are approximate. Please see a Community Sales Manager and visit [www.traditionhomes.com](http://www.traditionhomes.com) for details. © 2022, Tradition Homes, LLC. All rights reserved.

**The Tradition Continues**

TRADITIONHOMES.COM